

2012

2012 12

.....	3
.....	4
.....	5
.....	6
.....	7
.....	8
.....	12
.....	14
.....	16
.....	18
.....	20
.....	22
.....	25
.....	27
.....	29
.....	31
.....	32
.....	34
.....	36
.....	38
.....	39
.....	40
.....	43
.....	47
.....	48



1987

1999

2003

2006

2008

2010

Excellent Research, Better Estuaries and Coasts

			/		
		197202	/		
		197601	/		
		197312	/		
		197902	/		
		197510	/		
		198001	/		
		197910	/	- -	
		197810	/		
		197812	/		
		198503	/		
		198008	/		
		198204	/		
		1981002	/		
		198210	/		
		198112	/		

1

2

3

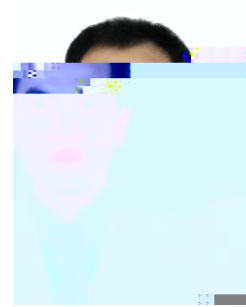
4



1972 2

86-25-83786821

jhzheng@hhu.edu.cn



2011.7~2011.8 University of Rostock  
2010.12 University of Dundee  
2010.7~2010.8 University of Rostock  
2006.12  
2005.10~2006.9 Kyoto University  
2001.4~2006.12  
1998.9~2001.4  
1995.9~1998.9  
1993.9~1995.7  
1989.9~1993.7

1  
2012BAB03B01 2011.10~2014.10  
2 Rotterdam Rijnmond  
NSFC NWO  
2011.1~2013.12  
3  
20100094110016 2011.1~2013.12  
4  
50979033 2010.1~2012.12  
5 973  
2010CB429002 2010.1~2014.9  
6  
SBK2011026 2011.7~2014.7

1 Lin, L., Demirbilek, Z., Mase, H., **Zheng J.H.**, Yamada, F., 2008. CMS-Wave: A nearshore spectral wave processes model for coastal inlets and navigation projects. Coastal Inlets Research Program, Coastal and Hydraulics Laboratory Technical Report ERDC/CHL-TR-08-13. U.S. Army Engineer Research and Development Center, Vicksburg, Mississippi, USA



- 2 , 2011. . ISBN 978-7-5630-2812-2/TV.318
- 3 , 2011. General rules for design of Port and Waterway Works  
JTS141-2011 . China Communication Press .Book No. 15114.1664
- 4 **Zheng Jinhai** , 2012. Hydrodynamics: theory and model. INTECH Publisher,  
Rijeka, Croatia. ISBN 978-953-51-0130-7
- 5 , , 2012. . . .
- 1 , , . ,  
2012
- 2 **Zheng Jinhai**, Wang Tianwen, Wang Gang, Zhang Chenming, Zhang Chi. Iteration  
coupling simulation of random waves and wave-induced currents. Journal of Applied  
Mathematics, 2012
- 3 **Zheng Jinhai**, Yan Yixin, Tong Chaofeng, Lei Zhiyi, Zhang Chi. Hydrodynamic and  
morphological processes in Yangtze Estuary: State-of-the-art researches and applications  
in Hohai University. Water Science and Engineering, 2012, 5(4)
- 4 Feng Xiangbo, **Zheng Jinhai**, Yan Yixin. Wave spectra assimilation in typhoon wave  
modeling for the East China Sea. Coastal Engineering, 2012, 69: 29-41
- 5 Zhang Jisheng, **Zheng Jinhai**, Jeng Dong-Sheng and Wang Gang. Numerical simulation  
of solitary wave induced flow motion around a permeable submerged breakwater. Journal  
of Applied Mathematics, 2012
- 6 Xue Mi an, **Zheng Jinhai**, Lin Pengzhi. Numerical simulation of sloshing phenomena in  
cubic tank with multiple baffles. Journal of Applied Mathematics, 2012
- 7 Tao Aifeng, **Zheng Jinhai**, Mee Mee Soe, Chen Botao. The most unstable conditions of  
modulation instability. Journal of Applied Mathematics, 2012
- 8 Nguyen Viet Thanh, Zheng Jinhai, Zhang Chi. Beach profiles characteristics along Giao  
Thuy and Hai Hau coasts, Vietnam: A field study. China Ocean Engineering, 2012 26(4)
- 9 , , . ,  
2012, 23 (1): 104- 109
- 10 Zhang Wei, Wei Xiaoyan, **Zheng Jinhai**, Zhu Yuliang, Zhang Yanjing. Estimating  
suspended sediment loads in the Pearl River Delta region using sediment rating curves.  
Continental Shelf Research, 2012, 38: 35-46
- 11 , , . Boussinesq  
 , 2012, 29(10): 239-243
- 12 , , . ,  
2012, 32 (3): 67- 74
- 13 Yan Yanjuan, **Zheng Jinhai**, Huang Huiming. Numerical simulation of accidental oil spill  
in Min River Estuary. In: The Proceedings of the 10th Pacific/Asia Offshore Mechanics  
Symposium, Vladivostok, Russia, 2012: 191-196. ISBN 978-1-880653-93-7
- 14 **Zheng Jinhai**, Yan Yixin, Huang Huiming, Wang Yigang. Large scale reclamation and  
development off Jiangsu Coasts: opportunities and challenges. In: Proceedings of the 6th  
Chinese-German Joint Symposium on Hydraulic and Ocean Engineering, Keelung, China,  
2012, 329-342.

- 15 Nguyen Viet Thanh, **Zheng Jinhai**. Preliminary study of regulation schemes for navigation channel in Dinh An Estuary, Vietnam. Applied Mechanics and Materials. 2012
- 16 **Zheng Jinhai**, Ding Fei, Dai Peng, Wu Teng and Ju Yao. Fix-bed experimental study on shipyard engineering in Min Estuary. In: The Proceedings of the Twenty-Second International Offshore and Polar Engineering Conference, Rhodes, Greece, 2012, Vol.IV:963-968.
- 17 **Zheng Jinhai**, Ju Yao, Dai Peng and Wang Zhen. Morphodynamic and current characteristics in Min Estuary, China. In: The Proceedings of the Twenty-Second International Offshore and Polar Engineering Conference, Rhodes, Greece, 2012, Vol.III:1433-1439.
- 18 Dai Peng, **Zheng Jinhai**, Ju Yao and Zhang Yun. Analysis of sea bed evolution of Min Estuary. In: The Proceedings of the Twenty-Second International Offshore and Polar Engineering Conference, Rhodes, Greece, 2012, Vol.III:1387-1391.
- 19 **Zheng Jinhai**, and Wang Tianwen. Wave calculations for Linggang Maritime Engineering Base in Hangzhou Bay, China. In: Proceedings of 8th International Conference on Coastal and Port Engineering in Developing Countries, Chennai, India, 2012, 11-18

1			2012	2		
2			2010	1		
3	2010	2				
4			2009	3		
5		2009	2			
6			2007	2		
7				2007	2	
8						
9		2011	1			2012
10			2011			
11			2011			
12	333					2011
13				A	2009	
14					2008	
15			2008			
16			2007			
17					2006	

1	SPH		V1.0 HHU-SPHWT	2008SR15409
		102588	2008 06 01	
2			V1.0 HHU-WABED	2009SR023141
		0150140	2009 03 02	
3			V1.0 HHU-WINCM	2010SR026408
		0214681	2009 05 26	

1

2

3

4

5

6 Bentham Science Publisher      The Open Civil Engineering Journal

7      Water Science and Engineering

8

9

10 Scientific committee member, Chinese-German Joint Symposium on Hydraulic and Ocean Engineering

11 Local organizing committee, The 7th IAHR Symposium on River, Coastal and Estuarine Morphodynamics

12

13

14

ISOPE

1976 1

86-25-83787708

ypchen@hhu.edu.cn

2011.8~2011.9	Research Fellow
2010.12	
2007.3~2010.8	University of Plymouth
2006.8~2007.1	Research Associate
2003.4~2006.12	
2002.4~2003.3	Research Asssistant
1999.9~2002.4	
1996.9~1999.8	
1992.9~1996.7	

1			,
	201201045	2012.1~2014.12	
2			
	2012.1~2013.12		
3			

- 2 **Chen, Y. P.**, Jiang, N. L. and Zhang, C. K.. Riverbed evolution of upper part of Yangtze Estuary and its response to the recent hydrodynamic changes. The 33rd International Conference on Coastal Engineering (ICCE) Santander, Spain, 2012
- 3 Jiang, N. L., **Chen, Y. P.** and Zhang, C. K. Riverbed Evolution of Chengtong Reach at Yangtze Estuary. The 22nd International Society of Offshore (Ocean) and Polar Engineering (ISOPE) Conference, Rhodes, Greece, 2012, vol. 3: 1382-1386
- 4 Reeve D. E., **Chen, Y. P.**, Pan, S., Magar, V. and Simmonds, D. J.. An investigation of the impacts of climate change on wave energy generation. The Wave Hub, Cornwall, UK. Renewable Energy, 2011, 36(9): 2404-2413
- 5 **Chen Y. P.** and Zhang, C. K.. Long-term hindcasting of wave climate for Jiangsu coast. The 6th International Conference on Asian and Pacific Coasts, Hong Kong, 2011: 678-683
- 6 Xu Z. S., **Chen Y. P.**, Li C. W. and Zhang, C. K.. Characteristic behaviours of a vertical round jet under different spectral waves. The 6th International Conference on Asian and Pacific Coasts, Hong Kong, 2011: 998-1005
- 7 **Chen Y. P.**, Zhang, C. K. and Pan, S.. Numerical simulation of waves and currents near L-shaped breakwater. The 21st International offshore (Ocean) and Polar Engineering (ISOPE) Conference, Maui, Hawaii, USA, 2011, vol. 3: 1123-1127
- 8 Pan, S., Geng, X., Yu, X., **Chen, Y. P.** and Wolf, J.. Modelling typhoon-induced waves and surge in East China Sea. The 21st International Offshore (Ocean) and Polar Engineering (ISOPE) Conference, Maui, Hawaii, USA. 2011, vol.3: 408-413
- 9 , , . , 2012, 23(3): 456-463
- 10 , , . , 2012, 330-338
- 11 , , . , 2011(12): 112-117
- 12 , , . , 2011, 17(6): 8-9
- 13 , , . , 2011, 1160-1163

1 2011, 8

2 2010, 8

1 111

2 (IAHR-HHU)

1973 12

86-25-83786983

chaofengtong@hhu.edu.cn



2009.12 Virginia Institute of Marine Science  
2008.5~  
2005.4~2008.5  
2000.9~2005.3  
1997.9~2000.5  
1993.9~1997.7

1		2010585312	2010.10~2012.12	
2				973
		2010CB429002	2010.1~2014.9	
3	50			
		2012856216	2012.9~2012.12	
4				
		2012.5~2012.11		

- 1 **Chaofeng Tong**, Liangliang Yue, Jialin Hao, Yixin Yan, Yuyang Shao. A Modeling Study to Impacts of Water Diversion and Anthropogenic Inputs on Water Quality in Waiqinhuai Creek, Nanjing. The 6<sup>th</sup> Chinese-German Joint Symposium on Hydraulic and Ocean Engineering, 2012, 31~38
- 2 **Tong Chaofeng**, Zheng Jinhai, Zhang Cheng, Claude Guilband. Salinity response to the runoff from Yangtze River Basin at Qingcaosha Reservoir area in Yangtze Estuarn. Proceedings of the ASME 29th International Conference on Ocean, Offshore and Arctic Engineering(OMAE2010), Shanghai, China, 2010
- 3 Li Qiang, **Tong Chaofeng**, Tian Zhongnan. Research on the flow and sediment diversion characteristics in the branch rivers of the lower Yangtze River. Proceedings of the 3rd International Conference on Estuary and Coasts, Sendei, Japan, 2009

- 4 Wu De-an, **Tong Chaofeng**, Hu Guo-dong. Calculation of sediment sedimentation rate of radial sand ridge in Jiangsu coast. Proceedings of the International Conference on

1979 2

86-25-83786983

zhangweihhu@126.com



2011.12~ 2012.11 University of Utrecht  
2010.01~  
2009.05~ 2009.12  
2007.03~ 2009.04  
2001.09~ 2006.12  
1997.09~ 2001.06

1  
41006046 2011.01~2013.12  
2  
20100094120008 2011.01~2013.12  
3 Rotterdam Rijnmond  
NSFC NWO  
51061130545 2011.1~2014.12  
4  
2009586712 2010.01~2012.12  
5 200901034  
2009.09~2012.09

- 1 **Zhang Wei**, Feng H.C., Zheng J.H. A.J.F., Hoitink, M. van der Vegt, Zhu, Y.L., Cai, H.J.. Numerical Simulation and Analysis of Saltwater Intrusion Lengths in the Pearl River Delta, China, 2012
- 2 **Zhang Wei**, Wei, X.Y., Zheng, J.H., Zhu, Y.L., Zhang, Y.J.. Estimating suspended sediment loads in the Pearl River Delta region using sediment rating curves. Continental Shelf Research , 2012, 38: 35-46
- 3 **Zhang Wei**, Mu, S.S, Zhang, Y.J., Chen K.M.. Temporal variation of suspended sediment load in the Pearl River due to human activities. International Journal of Sediment Research,2011, 26(4): 488-499
- 4 **Zhang Wei**, Abrupt changes in morphology of the Pearl River Networks. Conference on Morphological and Ecological Aspects of Tidal Channel Networks, Holland, 2011



- 5 **Zhang Wei**, Ruan, X.H., Zheng, J.H., Zhu, Y.L., Wu, H.X.. Long-term change in tidal  
dynamics and its cause in the Pearl River Delta. *Geomorphology*, 2010, 120: 209-223
- 6 , , , , . 30  
, 30(6): 591-596
- 7 , , , . ,  
2010, 22-28
- 8 , , , . ,  
2010, 21(1): 77-83
- 9 **Zhang, W.**, Yan, Y.X., Zheng, J.H., Li, L., Dong, X., Cai, H.J.. Temporal and spatial  
variability of annual extreme water level in the Pearl River Delta. *Global and Planetary  
Change*, 2009, 69: 35-47
- 10 , , , .  
, 2008, 39(9) 1098-1103
- 11 , . ( ,  
), 2008, 36(6): 838-841
- 12 **Zhang Wei**, Yang Mingyuan,Zhou Xiaoyan. One-D and three-D combined hydrodynamic  
numerical model for river networks and estuary. *Proceedings of the 4th Chinese-German  
Joint Symposium on Hydraulic and Ocean Engineering*, Germany, 2008
- 13 **Zhang Wei**, Hao Jialing. Human impacts on the hydrology in Pearl River delta.  
*Proceedings of the ASME 27th International Conference on Offshore Mechanics and  
Arctic Engineering*, America, 2008
- 14 **Zhang Wei**, Li Ling, Dong Xue. Analysis of hydrodynamic characteristics and estuarine  
dynamic process of the Dongjiang River Delta based on 1-D numerical model.  
*Proceedings of 16th IAHR-ADP Congress*, China, 2008

1 2011

2 2011, 4 2009

3 2009, 4 2009

4 (2009, 7) 2010

2010, 3

1975 10

86-25-83787340

gongzheng@hhu.edu.cn



2010.9~2011.9 Delft University of Technology

2006.9~

2002.12~2006.9

2000.12~2001.1

1999.3~2002.12

1997.9~1999.3

1993.9~1997.7

1

51009062 2011.01~2013.12

2

2009586812 2010.01~2012.12

3

973

2010CB429001 2010.01~2014.12

4

(200801016), 2008.09~2011.08

5

2012BAB03B02

2011~2014

6

51179067 2012~2014

1

2009.

1

**Gong, Z.**, Wang Z.B., M.J.F. Stive, Zhang, C.K., Chu A. Process-based morphodynamic modeling of a schematized mudflat dominated by a long-shore tidal current at the central Jiangsu coast, China. *Journal of Coastal Research*

2

**Gong, Z.**, Zhang, C.K., Wan, L.M., Zuo, J.C. Tidal level response to sea-level rise in the Yangtze Estuary. *China Ocean Engineering*, Vol.26(1): 109-122

3

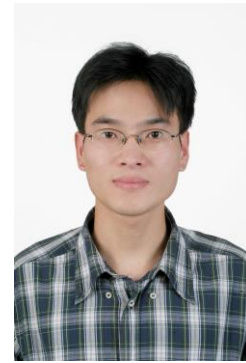
Vol. 30(1): 112-118

- 4 Zuo, C.B., **Gong,Z.**, Zhang, C.K., 2011. Flow and sediment transport numerical modeling  
of complex river networks. Proceedings of the 21st International Offshore and Polar  
Engineering Conference, Maui, Hawaii, USA, 2011, 1019-1025
- 5 **Gong,Z.**, Chang-kuan Zhang, Cheng-biao Zuo, Wei-deng Wu. Sediment transport  
following the water transfer of Taihu Basin from the Yangtze River. Water Science and  
Engineering, 2011, 4(4)
- 6 **Gong,Z.**, Z.B. Wang, M.J.F.Stive, C.K.Zhang. Tidal flat evolution at the central Jiangsu  
coast. Proceedings of the Sixth International Conference on Asian and Pacific Coasts  
(APAC 2011).Hong Kong, China, 2011
- 7 **Gong,Z.**, Zuo Chengbiao, Zuo Juncheng, Ji Hongyan, Sheng Genming. The effects on  
tidal characteristics in Yangtze Estuary due to Yangtze Estuary comprehensive regulation  
projects and sea-level rise. Proceedings of the twentieth International Offshore and Polar  
Engineering Conference, Beijing, China, 2010, 935-939
- 8 **Gong,Z.**, Zhang Changkuan, Tao Jianfeng. Adaptability research of tidal flat  
reclamation and tidal inlet stability in Jiangsu coastal zone. Proceedings of the 5th  
International Conference on Asian and Pacific Coasts, 2009
- 9 **Gong,Z.**, Lin Zexin. Strategy of flood control in Taihu basin. IAHR-APD, 2008
- 10 , , , , .  
 , 2010, 73-78
- 11 , , , . ,  
2010, 38(4)
- 12 , , .  
 , 2009, 559-562
- 13 , , .  $\sigma$  . , 2007,  
18(5): 717-723
- 14 , , , . ,  
2004, 15(3)
- 15 , , , .  
 , 2004, 22(2)
- 16 , , , .  
 , 2003, 31(6)
- 2011, 3)
- 2
- 3 2010, 3
- 4 (2009, 4)
- 5 (2005, 7)
- 6 , 2009

1980 1

025-83786752

aoetao@hhu.edu.cn



2001.4

2007.3~2011.4

2003.3 2006.12

2001.9 2003.2

1997.9 2001.7

1		51109074
	2012.1~2014.12	
2		973
		2010CB429001
	2010CB429001-2 2010.1~2014.12	
3		
	(20090094120005), 2010.1~2012.12	
4		
	(2012585312), 2012.5~2014.12	
5		
	200905 2010.1~2012.12	
6		
	2010B03014 2010.7~2012.6	
7		
	51179067 , 2012.1~2015.12	

- 1 **J.F. TAO**, T. YANG, F. XU, J. YAO. Effect of large scale tidal flat reclamation on hydrodynamic circulation in Jiangsu coastal areas. Proceedings of the 6th International Conference on Asian and Pacific Coasts (APAC 2011) , Hong Kong, China, December 14-16, 2011, 662-669
- 2 J. Yao, **J.F. Tao**, C.K. Zhang. Numerical modelling of 3D baroclinic flow and thermal discharge in coastal waters. Proceedings of the 34th IAHR Congress, Brisbane, Australia, 2011, 4537-4543

- 3 Yang Ting, **Tao Jianfeng**, Zhang Changkuan. The water and sediment discharge change in different seasons in the south and north channel of Yangtze Estuary. Proceedings of the 7th IAHR Symposium on River, Coastal and Estuarine Morphodynamics (RCEM2011), Beijing, China, 2011, 147-153
- 4 **J. F. Tao**, C. K. Zhang, J. Yao, Z. Gong. Numerical simulation of tides and tidal currents in Jiangsu offshore areas, China. Proceedings of the 19th International Offshore and Polar Engineering Conference, Osaka, Japan, 2009, 1243-1247
- 5 **Tao Jianfeng**, Zhang Changkuan. A three dimensional baroclinic flow numerical model in estuarine and coastal regions using double sigma coordinates system. Proceedings of 16th APD-IAHR Congress and 3rd Symposium of IAHR-ISHS, Nanjing, China, 2008, 1178-1185
- 6 **Tao Jianfeng**, Wang Zhen, Zhang changkuan. Numerical simulation of water environment in radial sand ridges area of the Yellow sea. Proceedings of XXXI IAHR Congress, Korea, 2005, 4279-4286
- 7 ( ), , .  
 . , 2012, 43(5): 84-88
- 8 ( ), , .  
 . , 2012, 40(3): 338-344
- 9 , , .  
 , 2011, 39(2): 225-230
- 10 , . , 2008,  
 26(1): 71-76
- 11 , .  
 , 2007, 25(1): 133-142
- 12 , . , 2005,  
 33(4): 472-475

1979 10

- -

86-25-83786619

jszhang@hhu.edu.cn



2012.04

2011.12 2012.03

2009.6 2011.11 University of Dundee

2009.1 2009.5 Fisheries Research Services, Scotland

2005.4 2009.5 University of Aberdeen

2002.9 2005.3

1998.9 2002.7

1

51209083 2013. 1~2015. 12

2

2012.11

3

51137002

2012.1~2016.12

4

BK2011026 2012.1~2014.12

1 **Zhang Jisheng**, Zhang Chi, Wu Xiuguang, Guo Yakun, 2011. Astronomical tide and typhoon-induced storm surge in Hangzhou Bay, China. In: Hydrodynamics Natural Water Bodies, Chapter 9, Intech, Rijeka. ISBN 978-953-307-893-9

1 **Zhang Jisheng**, Zhang Chi, Jeng Dongsheng. Three-dimensional model for wave-induced dynamic pore pressure around monopile foundation. The 10th International Conference on Numerical, Analysis and Applied Mathematics, Kos, Greece, 19-25 September, 2012

2 **Zhang Jisheng**, Zhang Yu, Jeng Dongsheng, Zhang Chi. Numerical modeling of seabed response to combined wave-current loading. The 31st International Conference on Ocean, Offshore and Arctic Engineering, Rio de Janeiro, Brazil. 1-6 July, 2012

- 3 **Zhang Jisheng**, Zheng Jinhai, Jeng Dongsheng, Wang Gang. Numerical simulation of solitary wave induced flow motion around a permeable submerged breakwater. *Journal of Applied Mathematics*, 2012
- 4 **Zhang Jisheng**, Jeng Dongsheng, Liu Pilips Li-Fan, Zhang Chi. Response of a porous seabed to water waves over permeable submerged breakwaters with Bragg reflection. *Ocean Engineering*, 2012, 43: 1-12
- 5 Liu Bo, Jeng Dongsheng, **Zhang Jisheng**. Dynamic response in a porous seabed of finite depth to combined wave and current loadings. *Journal of Coastal Research*, 2012
- 6 Lu Jianfei, Jeng Dongsheng, Wan J, **Zhang Jisheng**. A new model for the vibration isolation via pile rows consisting of infinite number of piles. *Journal for Numerical and Analytical Methods in Geomechanics*, 2012
- 7 Zhang Yu, Jeng Dongsheng, Gao Fuping, **Zhang Jisheng**. An analytical solution for response of a porous seabed to combined wave and current loading. *Ocean Engineering*, 2012
- 8 Guo Yakun, Wu Xiuguang, Pan Cunhong, **Zhang Jisheng**. Numerical simulation of the tidal flow and suspended sediment transport in the Qiantang Estuary. *Journal of Waterway, Port, Coastal, and Ocean Engineering*, ASCE, 2012, 138(3): 192-202
- 9 Jeng Dongsheng, Zhang Yu, **Zhang Jisheng**, Zhang Chi, Liu Pilips Li-Fan. Numerical modeling of wave-induced soil response around breakwater heads. The 6th International Conference on Asian and Pacific Coasts, Hong Kong, China, 14-16 December 2011
- 10 **Zhang Jisheng**, Jeng Dongsheng, Liu Pilips Li-Fan. Numerical study for waves propagating over a porous seabed around a submerged permeable breakwater: PORO-WSSI II model. *Ocean Engineering*, 2011, 38(7): 954-966
- 11 Zhang Chi, Zheng Jinhai, Wang Yigang, Zhang Mengtao, Jeng Dong-sheng and **Zhang Jisheng**. Comparison of turbulence schemes for predicting wave-induced near-bed sediment suspension above a plane bed. *China Ocean Engineering*, 2011, 25(3): 395-412
- 12 **Zhang Jisheng**, Wang Bo, Jeng Dongsheng, Guo Yakun. Numerical modeling of wave motion and seabed response around a submerged porous breakwater. The 20th International Offshore and Polar Engineering Conference, Beijing, China, 20-26 June 2010
- 13 Jeng Dongsheng, Luo Xiaodong, **Zhang Jisheng**. Numerical model for rocking of mono-pile in a porous seabed. COMSOL Conference 2010, Paris, France, 17-19 November 2010
- 14 Jeng Dongsheng, Luo Xiaodong, **Zhang Jisheng**. Integrated model for ocean waves propagating over marine structures on a porous seabed. COMSOL Conference 2010, Paris, France, 17-19 November 2010
- 15 Guo Yakun, **Zhang Jisheng**. Numerical modeling of hydrodynamics in the Southampton Water . The 6th International Symposium on Environmental Hydraulics, Athens, Greece, 23-25 June 2010
- 16 **Zhang Jisheng**, Jeng Dongsheng. Integrated model for wave motion and seabed response around a submerged permeable breakwater . The 23rd Scottish Fluid Mechanics Meeting, Dundee, UK, 19 May 2010

- 17 **Zhang Jisheng**, Jeng Dongsheng. Solitary wave-induced flow motion and seabed response around a porous breakwater . The 6th UK Young Coastal Scientists and Engineers Conference, London, UK, 29-30 March 2010
- 18 **Zhang Jisheng**, Wang Bo, Jeng Dongsheng, Liu Pilips Li-Fan. An integrated model of wave-seabed-structure interaction. Journal of Hydrodynamics, Serial B, 2010, 22(5 Suppl. 1): 126-131
- 19 Guo Yakun, **Zhang Jisheng**, Zhang Lixiang. Numerical simulation of 3D flow around an overlapping cylinder. Proceedings of ICE - Maritime Engineering, 2010, 163(2): 49-56
- 20 Wang Feng, Wang Ming, He Shuisheng, **Zhang Jisheng**, Y. Deng. Computational study of effects of jet fans on the ventilation of a highway curved tunnel. Tunnelling and Underground Space Technology, 2010, 25(4): 382-390
- 21 Guo Yakun, **Zhang Jisheng**, Zhang Lixiang, Shen Yongming. Computational investigation of typhoon-induced storm surge in the Hangzhou Bay, China. Estuarine, Coastal and Shelf Science, 2009, 85(4): 530-536
- 22 **Zhang Jisheng**, Guo Yakun, Shen Yongming, Zhang Lixiang. Numerical simulation of flushing of trapped salt water from a bar-blocked estuary. Journal of Hydraulic Engineering, ASCE, 2008, 134(11): 1671-1676
- 23 **Zhang Jisheng**, Guo Yakun, Wang Pingyi. Effects of sediment concentration and initial phosphorus loading on phosphate adsorption in the Chongqing Reach of the Yangtze River. Journal of Environmental Engineering, ASCE, 2008, 134(7): 585-589
- 24 Guo Yakun, Zhang Lixiang, Shen Yongming, **Zhang Jisheng**. Modeling study of free overfall in a rectangular channel with strip roughness. Journal of Hydraulic Engineering, ASCE, 2008, 134(5): 664-667
- 25 Jing Hefang, Guo Yakun, Li C, **Zhang Jisheng**. Three dimensional numerical simulation of compound meandering open channel flow by Reynolds stress model. International Journal for Numerical Method in Fluids, 2008, 59(8): 927-943
- 26 Guo Yakun, **Zhang Jisheng**, Shen Yongming, Zhang Lixiang. Calculation of flushing of trapped salt water in a cavity using a numerical model . The 2nd International Symposium on Shallow Flows, Hongkong, China, 10-12 December 2008
- 27 **Zhang Jisheng**, Guo Yakun. of Hydrodynamics in Qiantang Estuary . The 4th UK Young Coastal Scientists and Engineers Conference, Oxford, UK, 9-11 April 2008

- 1 Institution of Civil Engineers
- 2 The 32<sup>nd</sup> International Conference on Ocean, Offshore and Arctic Engineering (OMAE 2013), Session Chair
- 3 The 31<sup>st</sup> International Conference on Ocean, Offshore and Arctic Engineering (OMAE 2012), Session Co-Chair
- 4 Ocean Engineering, Journal of Offshore, Mechanics and Arctic Engineering, Environmental Engineering Science, Environmental Fluid Mechanics, Engineering Applications of Artificial Intelligence, The Open Civil Engineering



1978 10

86-25-83787914  
aftao@hhu.edu.cn



2012.7

2009.9~2012.7

2010.7~2010.9

University of Rostock

2008.3~2009.7

Massachusetts Institute of Technology

2004.3~2007.12

2006.10~2006.11

2002.9~2004.3

1998.9~2002.7

1

41106001 2012.1~2014.12

2

(51137002)

2012.01-2014.12

3

SBK201150230

2012.01-2014.12

4

200901

2010.1~2012.1

5

2009.10~2011.9

6

Comparative Study on the Coastal Protection at German Baltic Sea and Chinese East-Southern Coasts Project Based Personnel Exchange Program with China Scholarship Council and German Academic Exchange Service [2009]6037  
2010.1~2011.12

7

200901062 2009.10~2012.09

8

Mechanism of Wave-Seabed-Structure Interaction (WSSI) in Coastal Zones: Process, Simulation and Understanding Scotland-China Higher Education Research Partnership for PhD Studies [2010]6044 2010.3~2011.3

9

51028613 2009.12-2010.6

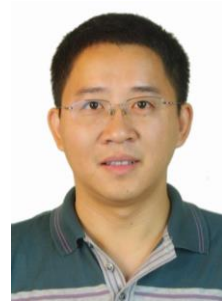
- 1 **Tao Aifeng**, Zheng Jinhai, Mee Mee Soe, Chen Botao. The Most Unstable Conditions of Modulation Instability. *Journal of Applied Mathematics*, 2012
- 2 **Tao Aifeng**, Zheng Jinhai, Mee Mee Soe, Chen Botao. Re-study on recurrence period of Stokes wave train with High Order Spectral method. *China Ocean Engineering*, 2011, 25(4): 679-686
- 3 **Tao Aifeng**, Liu Yuming. Rogue Waves due to nonlinear broadband wave interactions. *Proceedings of the 25th International Workshop on Water Waves and Floating Bodies (IWWWFB25)*, Harbin, China, 2010
- 4 **Tao Aifeng**, Yan Yixin, Zheng Jinhai, Zhang Wei. Characteristics of Stokes wave train long time evolution. *Proceedings of Chinese-German Joint Symposium on Hydraulic and Ocean Engineering (CG JOINT 2010)*, Tianjin, China, 2010, 284-287
- 5 Yan Yixin, **Tao Aifeng**, Yu Dongsheng, Yang Jinyan. Analysis on the circulation of Yangtze River Estuary based on ADCP measurements. *China Ocean Engineering*, 2007, 21(3): 485-494
- 6 **Tao Aifeng**, Yan Yixin, Wang Jianzhong. Researching on disastrous rogue waves in China. *Proceedings of 4th International Conference on Asian Pacific Coasts (APAC 2007)*, Nanjing, China, 2007, 255-258
- 7 **Tao Aifeng** Li Rui-jie et al. Numerical simulation and analysis to tidal currents and wave field of Huangmao sea. *Proceedings of 15th APD, IHAR Congress, Chennai, Indian*, 2006, 1127-1132
- 8 , . , 2008, 17(1): 175-180
- 9 , , . , 2006, 24(6): 42-44
- 10 , , , . 5000 . , 2005, 343-346
- 11 , , . . , 2004, 32: 104-106

- 1 2010 9
- 2 2009 8

1978 12

86-25-83787349

kongjun999@126.com



2012.7

2010.11~2011.11 University of Queensland

2007.7~ 2012.7

2005.9~2009.5

2002.9~2005.7

1997.9~2001.7

(51009059)

(1002023C)

(200901032-03)

(2009423611)

2010B02914

(2007491211)

1 , , , , 2010. - .

2 , , , , 2008. .

1 **Jun Kong**, Chen Cheng, Chenji Shen. Study on the role of sediment dike in the port construction near silt coast, Applied Mechanics and Materials, 2012, 204-208: 2298-2308

2 **Jun Kong**, Pei Xin, Chenji Shen, et al. A High-resolution method for the depth-integrated solute transport equation based on an unstructured mesh. Environmental Modeling & Software, 2012

3 **Kong Jun**, Song Zhi-yao, Xin Pei, Shen Cheng-ji. A new analytical solution for  
 tide-induced groundwater fluctuations in an unconfined aquifer with a sloping beach.  
 China Ocean Engineering, 2011, 25(3): 479-494

4 **Jun Kong**, Pei Xin, Zhiyao Song, Ling Li. A new model for coupling surface and  
 subsurface water flows: With an application to a lagoon. Journal of Hydrology, 2010, 390:  
 116-120

5 **Kong Jun**, Xue Xiaoxiao. Tidal movement characteristics outside the Pearl River estuary  
 and its influence on the mouths, The 28th International Conference on Offshore  
 Mechanics and Arctic Engineering, Hawaii, USA , 2009

6 **Kong Jun**, Song Zhiyao, Xia Yunfeng and Zhang Weisheng. Simulation study on the  
 characteristic of water and sediment exchange in the joint waters between Changjiang  
 estuary and Hangzhou bay. China Ocean Engineering, 2007, 21(2): 255-266

7 , .  
 A, 2010, 25(4): 460-468

8 , , .  
 2010, 32(2): 32-34

9 , , .  
 , 2009, 30(2): 77-81

10 .  
 2008, 25: 74-79

11 , , . , 2006,  
 34(4): 456-459

12 , , . , 2005, 23(1): 93-96

13 , , . , 2001,  
 29(5): 13-17

1 (2011, 8)

2 (2010)

3

4 2009 5 (2006)

1 2010SR026172.

2 : 2012R11S106506.

1985 3

86-25-83786619  
zhangchi@hhu.edu.cn



2012.6  
2010.10 2011.10 University of Dundee  
2010.6 2012.5  
2007.3 2010.6  
2005.9 2007.2  
2001.9 2005.6

1  
2012BAB03B01 2011.10~2014.10  
2 51109075  
2012.1~2014.12  
3 Rotterdam Rijnmond  
NSFC NWO  
51061130545 2011.1~2013.12  
4  
50979033 2010.1~2012.12

1 , 2010. . ISBN  
978-7-5630-2760-6/TV 308

2 Zheng Jinhai, Wang Gang, **Zhang Chi**, Liu Yingqi. 2012. Numerical Wave Flumes based on Smoothed Particle Hydrodynamics. Hydordynamics, Intech, Rijeka, Chapter 10, 233-254

3 Zhang Jisheng, **Zhang Chi**, Wu Xiuguang, Guo Yakun, 2011. Astronomical tide and typhoon-induced storm surge in Hangzhou Bay, China. In: Hydrodynamics Natural Water Bodies, Chapter 11, Intech, Rijeka.

1 **Zhang Chi**, Zheng Jinhai, Wang Yigang, Zhang Mengtao, Jeng Dong-sheng and Zhang Jisheng. A process-based model for sediment transport under various wave and current conditions. International Journal of Sediment Research, 2011, 26(4):500-514

2 **Zhang Chi**, Zheng Jinhai, Wang Yigang, Zhang Mengtao, Jeng Dong-sheng and Zhang  
 Jisheng. Comparison of turbulence schemes for predicting wave-induced near-bed  
 sediment suspension above a plane bed. *China Ocean Engineering*, 2011, 25(3):395-412

3 **Zhang Chi**, Zheng Jinhai, Wang Yigang and Zeki Demirbilek. Modeling wave-current  
 bottom boundary layers beneath shoaling and breaking waves. *Geo Marine Letter*, 2011,  
 31(3): 189-201

4 **Zhang Chi**, Wang Yigang, Zheng Jinhai. Numerical study on vertical structures of  
 undertow inside and outside the surf zone. *Acta Oceanologica Sinica*, 2009, 28(5):  
 103-111

5 Zheng Jinhai, Mee Mee SOE, **Zhang Chi** and Hsu Taiwen. Numerical wave flume with  
 improved smoothed particle hydrodynamics. *Journal of Hydrodynamics*, 2010, 22(6):  
 773-781

6 , , . , ,  
 2012, 23(1): 107-112

7 , , . , , , 2009, 20(5): 747-754

1  
 2012 5

2  
 2010 6

3  
 2012

4  
 2012 1 2011

5  
 1  
 2008 1

1  
 V1.0 HHU-WINBED 2011

2  
 10 1  
 V1.0 HHU-CROSPE

3  
 2009 12 1  
 V1.0 HHU-WINCM 2010SR026408  
 0214681 2009 05 26 2

1980 8

86-13813802120

syy@hhu.edu.cn



2010.12

2005.9~2010.12

2008.10~2009.10 Virginia Institute of Marine Science

2006.10~2006.12

2002.9~2005.6

1998.9~2002.7

1

2010585312 2010. 10~2012. 12

2

2009ZX07317-007 2009. 10~2011. 12

3

B09020206 2010.6-2012.12

4

2012838316 2012.3-2013.3

5

2012B01114 2012.3-2014.12

1 **Shao Yuyang**, Yan Yixin, Maa Jerome Pea-Yea. In-situ measure settling velocity of the cohesive sediment near Baibao Shore in Changjiang Estuary. *Journal of Hydraulic Engineering-ASCE*, 2011, 137(3): 372-380

2

, , .  
2011, (3): 29-36

3

, , .  
2009, (5): 120-126

4

**Shao Yuyang**, Yan Yixin, Maa Jerome Pea-Yea., Hobbs III, C.H. In-situ Measurements of Settling Velocity at Xuliujing in the Changjiang Estuary. *Proceedings of the the 8th International Symposium on Ecohydraulics*, Seoul, Korea, 2010

1982 4

86-25-83787914  
fxbhhu@hhu.edu.cn



2011.10 University of Southampton  
2011.07~2011.08 University Rostock  
2010.07~2010.09 University Rostock  
2010.06  
2007.11~2010.01  
2007.03~2010.06  
2005.09~2006.12  
2001.09~2005.06

- 1 Global Networking to Improve Prediction of Extreme Marine Events, The Lloyd's Register Educational Trust (United Kingdom) Project, 2011.10~2015.10, hosted post-doc.
- 2 51109075 2012.01~2014.12
- 3 2011B05814 2011.05~2013.04
- 4 X 2008491011 2009.01~2010.11
- 5 20100094120008 , 2011.01~2013.12

- 1 **Feng Xiangbo**, Zheng Jinhai, Yan Yixin. Wave spectra assimilation in typhoon wave modeling for the East China Sea. Coastal Engineering, 2012, 69: 29-41
- 2 **Feng Xiangbo**, Wang Hao, Yan Yixin. Establishment and data analysis of sea-state monitoring system along Taiwan coast. Marina Science Bulletin, 2012, 14, (1): 42-56
- 3 Parada, J., **Feng, X.**, Hauerhof, E., Suzuki, R., Abubakar, U.. Seabed Exploitation: The deep sea energy park: Harvesting hydrothermal energy for seabed exploration. September 2012
- 4 **Feng Xiangbo**, Yan Yixin, Zhang Wei. Two-dimensional wavelet transform applied to nearshore X-Band radar images, Journal of Hydrodynamics, 2011, (2):179-186

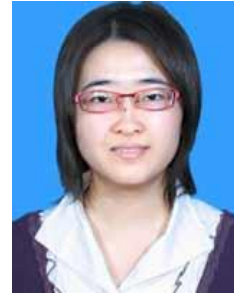


- 5 Zheng Jinhai, **Feng Xiangbo**, Yan Yixin. Development of typhoon driven wave  
nowcasting model in southeast china Sea. Journal of Engineering Sciences, 2011, 9(1):  
2-6
- 6 , , .  
. 2010, 30(1): 35-42
- 7 , , , . X , 2010,  
28(1): 104-109
- 8 , . , ,  
2008,36(6):838-841
- 9 **Feng, X.**, Tsimplis, M. N., Yelland, M.. Extreme waves at Polar front of North Atlantic  
from 2000 to 2009. General Assembly 2012 of the European Geosciences Union, Vienna,  
Austria, 22 - 27 April 2012
- 10 **Feng Xiangbo**, Yan Yixin, Chia Chuen Kao. Initialization issue about the changed wave  
field in SWAN wave model. The Fifth Sino-German Joint Symposium on Hydraulic and  
Ocean Engineering, Tianjin, China, 2010, 182-187
- 11 **Feng Xiangbo**, Yan Yixin, Chia Chuen Kao, Li-Chung Wu. Non-Homogeneity of  
nearshore wave field from X-Band radar images. The Nineteenth International Offshore  
and Polar Engineering Conference (ISOPE-2009), Osaka, Japan, 2009-TPC-297
- 12 **Feng Xiangbo**, Yan Yixin, Tong Chaofeng, Zhou Xiaoyan. Study on mechanism of water  
and suspended sediment longitudinal transport in flood season in west channel of  
Lingding Estuary. The Fourth Sino-German Joint Symposium on Hydraulic and Ocean  
Engineering, Germany 2008
- 13 Peter Fröhle. -  
2011
- 14 , .  
- 2009

1981 2

86-25-83786637

vastocean@hhu.edu.cn



2010.3

2007.9~2009.6 Dalhousie

2005.9~2009.11

2003.9~2005.7

1999.9~2003.7

1 Rotterdam Rijnmond  
NSFC NWO  
2011.1~2013.12 ( )  
2  
2011.6-2013.6

- 1 **Ji Xiaomei**, Yongzhan Zhang. Observational Study of Morphodynamics of Sandy Beaches in Yueliang Bay, Northeastern Hainan Island. The 6<sup>th</sup> Chinese-German Joint Symposium on Hydraulic and Ocean Engineering, Keelung, Taiwan, 2012
- 2 Yuliang Zhu, Xiaolu Yan, **Xiaomei Ji**. Prediction model of saline intrusion in Pearl River estuary. The 6<sup>th</sup> Chinese-German Joint Symposium on Hydraulic and Ocean Engineering, Keelung, Taiwan, 2012
- 3 **Ji Xiaomei**, ZHANG Yongzhan. Observational Study of Morphodynamics of Sandy Beaches in Qishui Bay, Northeastern Hainan Island. The 4<sup>th</sup> International Conference on Estuaries and Coasts, Vietnam, 2012
- 4 **Ji Xiaomei**, Sheng Jinyu, Tang Liqun, et al. Process study of dry-season circulation in the Pearl River Estuary and adjacent coastal waters using a triple-nested coastal circulation model. Atmosphere-Ocean, 2011, 49(2): 1-25
- 5 **Ji Xiaomei**, Sheng Jinyu, Tang Liqun, et al. Process study of circulation in the Pearl River Estuary and adjacent coastal waters in the wet season using a triply-nested circulation model. Ocean Modelling , 2011, 28(1-2): 138-160
- 6 , . , 2011, 31(2): 129-135

- 7 **Ji Xiaomei**, Tang Liqun. Investigation of storm surges over the Pearl River Estuary during typhoon No. 9316 using a Nested-Grid Coastal Circulation Model. , 2011
- 8 Jinyu Sheng, Liqun Tang, **Xiaomei Ji** and Dabin Liu. An Examination of Seasonal Mean Circulation and Salinity Distributions in the Pearl River Estuary of China Using a Nested-Grid Coastal Ocean Circulation Model, *Estuarine and Coastal Modeling*, 2010, 388: 108-127
- 9 **Xiaomei Ji**, Yongzhan Zhang, Dakui Zhu. Potential artificial beach design for Baipai Island in Sanya Bay. Proceedings of Chinese-German Joint Symposium on Hydraulic and Ocean Engineering. Tianjin, China, 2010
- 10 Liqun Tang, Jinyu Sheng, **Xiaomei Ji**, Wenhong Cao, and Dabin Liu. Investigation of circulation and hydrography over the pearl river estuary of china using a nested-grid coastal circulation model. *Ocean Dynamics*, 2009, 899-919
- 11 . . 2007, 27(5) 853-860
- 12 . . 2006 25(1) 44-53

1982 10

13813983932

gangwang@hhu.edu.cn



2011.1

2011.1

2005.9~2010.12

2001.9~2005.7

1

(2012M511671) 2012.01~2013.12

2

(1102071C)

2012.01~2013.12

3

(51209081), 2013.01~2015.12

1 **Wang, G.**, Zheng, J.. Subharmonic Generation of Transverse Oscillations Induced by Incident Regular Waves, The 33rd International Conference on Coastal Engineering, Santander, Spain, 2012, 10

2 **Wang, G.**, Zheng, J., Wang, T.. Cross-waves in a channel with trapezoidal depth, 4th International Conference on Estuaries and Coasts, Hanoi, Vietnam, 2012, 32-37

3 **Wang, G.**, Dong, G., Perlin, M., Ma, X. and Ma, Y.. An analytic investigation of oscillations within a harbor of constant slope. Ocean Engineering, 2011, 38: 479-486

4 **Wang, G.**, Dong, G., Perlin, M., Ma, X. and Ma, Y. Numerical investigation of oscillations within a harbor of constant slope induced by seafloor movements. Ocean Engineering, 2011, 38 (17-18):2151-2161

5 Dong, G., **Wang, G.**, Ma, X. and Ma, Y.. Harbor resonance induced by subaerial landslide-generated impact waves. Ocean Engineering, 2010, 37(10): 927-934

6 Dong, G., **Wang, G.**, Ma, X. and Ma, Y.. Numerical study of transient nonlinear harbor resonance. Science China-Technological Sciences, 2010, 53(2): 558-565

7 **Wang, G.**, Ma, X.Z. and Dong, G.H. Analytic study of transverse oscillations within a harbor of constant slope. Chinese-German Joint Symposium on Hydraulic and Ocean Engineering. Tianjin, 2010, 299-305

8

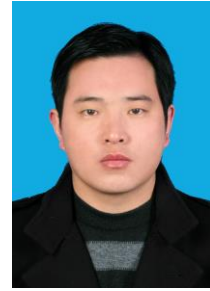
Boussinesq

, 2012, 29 (10): 239-243



1981 12

86-25-83786982  
mi-anxue@163.com



2011.9~

2006.9~2011.7

( )

2002.9~2006.6

- 1 LNG ,  
(51209080) , 2013.01-2015.12
- 2 ,  
(2012M511192), 2012.05~2013.09
- 3 ,  
(LP1207), 2012.09~2014.08

- 1 **Mi-An Xue**, Jinhai Zheng, Pengzhi Lin. Numerical simulation of sloshing phenomena in cubic tank with multiple baffles. *Journal of Applied Mathematics*, 2012
- 2 Xiao-Li Yuan, **Mi-An Xue**, Wen Chen, Tian-Qing An, Yan Cheng. Investigations on the structural, elastic, and electronic properties of the orthorhombic Zirconium-Nickel alloy under different pressure. *Computational Materials Science*, 2012, 65:127-132
- 3 **Mi-An Xue**, Pengzhi Lin. Numerical study of ring baffle effects on reducing violent liquid sloshing, *Computers & Fluids*, 2011, 52: 116-129
- 4 **Mi-An Xue**. Experimental Study of liquid sloshing in a tank under irregular wave excitation. 34th IAHR World Congress, 2011, 1255-1262
- 5 **Mi-An Xue**, Xiaoli Yuan, Xiaoying Fu, Jinghe Wu, Pengzhi Lin, Dong Hu, Song Ye, Wenjun Zhu. Effects of copper micro-particles on the detonation characteristics of RDX powder. *Journal of Physics D: Applied Physics*, 2009, 42(4): 1-5
- 6 **Mi-An Xue**, Jing-He Wu, Song Ye, Dong Hu, Xiang-Dong Yang. Shock-induced fast reactions of zinc nanoparticles and RDX. *Journal of Physics D: Applied Physics*, 2008, 41(4): 1-5

1 2010

1 Theoretical and Computational Fluid Dynamics



1	Rotterdam Rijnmond	NSFC NWO	51061130545	2011.01~2013.12
2	High-order Bragg resonance of surface waves by bottom ripples with and without the effect of current		51150110157	2011.07~2012.06
3			51137002	2012.01~2014.12
4			50979033	2010.01~2012.12
5			51179067	2012.01~2014.12
9			41006046	2011.01~2013.12
10			51109074	2012.01~2014.12
11			51009062	2011.01~2013.12
12			41106001	2012.01~2014.12
13			51109075	2012.01~2014.12
14			51009059	2011.01~2013.12
15			2012BAB03B 02	2011.10~2014.10
16			2012BAB03B 01	2011.10~2014.10
17	Numerical Simulation Tools for Protection of Coasts Against Flooding and Erosion	FP-7	PIRSES-GA-2009-247468	2010.01~2013.12
18		973	2010CB4290 01	2010.01~2014.12
19		973	2010CB4290 02	2010.01~2014.09



20			SBK2011502 30	2012.01-2014.12
21			201201045	2012.1~2014.12
22			200901062	2009.10~2012.9
23			200901032-3	2009.10~2012.9
24			200901033-2	2009.10~2012.9
25			200901034-2	2009.10~2012.9
26				

38			LP1207	2012.09~2014.08
39		A	R 2009 182	2009.10~2012.09
41			2012 258	2012.11
42			2011812916	2011.01~2012.6
43	50		2012856216	2012.9~2012.12
44			2012825616	2012.5~2012.11
45			2012838316	2012.3~2013.3

2012	3	53	18
11	22	2	

- 1 **Zhang Jisheng, Zheng Jinhai, Jeng Dongsheng, Wang Gang.** Numerical simulation of solitary wave induced flow motion around a permeable submerged breakwater. *Journal of Applied Mathematics*, 2012
- 2 **Zheng Jinhai, Yan Yixin, Tong Chaofeng, Lei Zhiyi, Zhang Chi.** Hydrodynamic and morphological processes in Yangtze Estuary: State-of-the-art researches and applications in Hohai University. *Water Science and Engineering*, 2012, 5(4)
- 3 Nguyen Viet Thanh, **Zheng Jinhai, Zhang Chi.** Beach profiles characteristics along Giao Thuy and Hai Hau coasts, Vietnam: A field study. *China Ocean Engineering*, 2012, 26(4)
- 4 **Zhang Wei, Feng H.C., Zheng J.H.** A.J.F., Hoitink, M. van der Vegt, Zhu, Y.L., Cai, H.J.. Numerical Simulation and Analysis of Saltwater Intrusion Lengths in the Pearl River Delta, China. *Journal of Coastal Research*, 2012
- 5 **Jun Kong, Pei Xin, Chenji Shen, et al.** A high-resolution method for the depth-integrated solute transport equation based on an unstructured mesh. *Environmental Modeling & Software*, 2012
- 6 **Zheng Jinhai, Wang Tianwen, Wang Gang, Zhang Chenming, Zhang Chi.** Iteration coupling simulation of random waves and wave-induced currents. *Journal of Applied Mathematics*, 2012
- 7 Nguyen Viet Thanh, **Zheng Jinhai.** Preliminary study of regulation schemes for navigation channel in Dinh An Estuary, Vietnam. *Applied Mechanics and Materials*, 2012
- 8 Xiao-Li Yuan, **Mi-An Xue,** Wen Chen, Tian-Qing An, Yan Cheng. Investigations on the structural, elastic, and electronic properties of the orthorhombic Zirconium-Nickel alloy under different pressure. *Computational Materials Science*, 2012, 65:127-132
- 9 **Gong, Z., Wang Z.B., M.J.F. Stive, Zhang, C.K., Chu A.** Process-based morphodynamic modeling of a schematized mudflat dominated by a long-shore tidal current at the central Jiangsu coast, China. *Journal of Coastal Research*
- 10 **Feng Xiangbo, Zheng Jinhai, Yan Yixin.** Wave spectra assimilation in typhoon wave modeling for the East China Sea. *Coastal Engineering*, 2012, 69: 29-41
- 11 **Chen, Y. P., Li, C. W. and Zhang, C. K., Xu, Z. S.** Numerical study on a buoyant jet under random waves. *China Ocean Engineering*, 2012, 26(2): 235-250
- 12 **Feng Xiangbo, Wang Hao, Yan Yixin.** Establishment and data analysis of sea-state monitoring system along Taiwan coast. *Marina Science Bulletin*, 2012, 14 (1): 42-56
- 13 **Mi-An Xue, Jinhai Zheng,** Pengzhi Lin. Numerical simulation of sloshing phenomena in cubic tank with multiple baffles. *Journal of Applied Mathematics*, 2012
- 14 **Tao Aifeng, Zheng Jinhai, Mee Mee Soe, Chen Botao.** The most unstable conditions of modulation instability. *Journal of Applied Mathematics*, 2012

- 15 **Zhang, Wei**, Wei, X.Y., **Zheng, J.H.**, Zhu, Y.L., Zhang, Y.J.. Estimating suspended sediment loads in the Pearl River Delta region using sediment rating curves. *Continental Shelf Research* , 2012, 38: 35-46
- 16 **Gong, Z.**, Zhang, C.K., Wan, L.M., Zuo, J.C. Tidal level response to sea-level rise in the Yangtze Estuary. *China Ocean Engineering*, Vol.26(1): 109-122
- 17 **Zhang Jisheng**, Jeng Dongsheng, Liu Pilips Li-Fan, **Zhang Chi**. Response of a porous seabed to water waves over permeable submerged breakwaters with Bragg reflection. *Ocean Engineering*, 2012, 43: 1-12
- 18 **Zheng Jinhai**, **Wang Gang**, **Zhang Chi**, Liu Yingqi. Numerical Wave Flumes based on Smoothed Particle Hydrodynamics. *Hydrodynamics*, Intech, Rijeka, 2012, Chapter 10: 233-254

1 **[Wang Gang, Zheng Jinhai, Zhang Chi, Liu Yingqi].** . 2012, 28(6): 24-29

2Gú

- 3 **Zhang Chi, Jinhai Zheng**, Titi Sui. A method to determine the cross-shore varying roller slope in the surf zone. Proceedings of the 4th International Conference on Estuaries and Coasts, Hanoi, Vietnam, 2012, 1: 26-31
- 4 Yan Yanjuan, **Zheng Jinhai**, Huang Huiming. Numerical simulation of accidental oil spill in Min River Estuary. In: The Proceedings of the 10th Pacific/Asia Offshore Mechanics Symposium, Vladivostok, Russia, 2012, 191-196
- 5 **Zheng Jinhai, Yan Yixin**, Huang Huiming, Wang Yigang. Large scale reclamation and development off Jiangsu Coasts: opportunities and challenges. Proceedings of the 6th Chinese-German Joint Symposium on Hydraulic and Ocean Engineering, Keelung, China, 2012, 329-342
- 6 **Chaofeng Tong**, Liangliang Yue, Jialin Hao, **Yixin Yan, Yuyang Shao**. A Modeling Study to Impacts of Water Diversion and Anthropogenic Inputs on Water Quality in Waiqinhuai Creek, Nanjing. The 6<sup>th</sup> Chinese-German Joint Symposium on Hydraulic and Ocean Engineering, Keelung, China, 2012: 31~38
- 7 **Tao Aifeng**, Wang Yao, Chen Botao. Review on the Occurrence Probability of Freak Waves. The 6<sup>th</sup> Chinese-German Joint Symposium on Hydraulic and Ocean Engineering, Keelung, China, 2012: 59-68
- 8 **Zhang Chi, Zhang Jisheng**, Jeng Dong-Sheng, **Zheng Jinhai**. Development of a three-dimensional model for wave-induced seabed response. The 6<sup>th</sup> Chinese-German Joint Symposium on Hydraulic and Ocean Engineering, Keelung, China, 2012: 557-562
- 9 **Xiaomei Ji**, Yongzhan Zhang. Observational Study of Morphodynamics of Sandy Beaches in Yueliang Bay, Northeastern Hainan Island. The 6<sup>th</sup> Chinese-German Joint Symposium on Hydraulic and Ocean Engineering, Keelung, China, 2012
- 10 Yuliang Zhu, Xiaolu Yan, **Xiaomei Ji**. Prediction model of saline intrusion in Pearl River estuary. The 6<sup>th</sup> Chinese-German Joint Symposium on Hydraulic and Ocean Engineering, Keelung, China, 2012
- 11 **Zhang Jisheng, Zhang Chi**, Jeng Dongsheng. Three-dimensional model for wave-induced dynamic pore pressure around monopile foundation. The 10th International Conference on Numerical, Analysis and Applied Mathematics, Kos, Greece, 19-25 September, 2012
- 12 **Jun Kong**, Chen Cheng, Chenji Shen. Study on the role of sediment dike in the port construction near silt coast, ICCAHE2012, Applied Mechanics and Materials, 2012, 204-208: 2298-

- 17 **Zheng Jinhai**, Ding Fei, Dai Peng, Wu Teng and Ju Yao. Fix-bed experimental study on shipyard engineering in Min Estuary. The Proceedings of the Twenty-Second International Offshore and Polar Engineering Conference, Rhodes, Greece, 2012
- 18 **Zheng Jinhai**, Ju Yao, Dai Peng and Wang Zhen. Morphodynamic and current characteristics in Min Estuary, China. In: The Proceedings of the Twenty-Second International Offshore and Polar Engineering Conference, Rhodes, Greece, 2012
- 19 Dai Peng, **Zheng Jinhai**, Ju Yao and Zhang Yun. Analysis of sea bed evolution of Min Estuary. In: The Proceedings of the Twenty-Second International Offshore and Polar Engineering Conference, Rhodes, Greece, 2012, Vol.III:1387-1391
- 20 Jiang, N. L., **Chen, Y. P.** and Zhang, C. K. Riverbed Evolution of Chengtong Reach at Yangtze Estuary. The 22nd International Society of Offshore (Ocean) and Polar Engineering (ISOPE) Conference, Rhodes, Greece, 2012, vol. 3: 1382-1386
- 21 **Zhang Jisheng**, Zhang Yu, Jeng Dongsheng, **Zhang Chi**. Numerical modeling of seabed response to combined wave-current loading. The 31st International Conference on Ocean, Offshore and Arctic Engineering, Rio de Janeiro, Brazil, 1-6 July, 2012.
- 22 **Zheng Jinhai**, Wang Tianwen. Wave calculations for Linggang Maritime Engineering Base in Hangzhou Bay, China. Proceedings of 8th International Conference on Coastal and Port Engineering in Developing Countries, Chennai, India, 2012, 11-18

- 1 , , . , , , 2012, 330-338
- 2 , . , , 2012, 385-391

**Zhang Jisheng, Zhang Chi**, Wu Xiuguang, Guo Yakun. Astronomical tide and typhoon-induced storm surge in Hangzhou Bay, China. In: Hydrodynamics Natural Water Bodies, Chapter 9, Intech, Rijeka, 2012. ISBN 978-953-307-893-9

**Zheng Jinhai**. Hydrodynamics: theory and model. INTECH Publisher, 2012, Rijeka, Croatia. ISBN 978-953-51-0130-7

, . , 2012

1 , , , 2012 03 01 , ZL 2010 1 0273480.0

1 , , . V1.0  
HHU-WINBED . 2011 10  
2 , . V1.0 HHU-CROSPE .  
2009 12  
3 , , . V1.0 HHU-WCI .  
2011 10

1 , : [2012] 30 , 2012 6 16

1 ,  
, 2012  
2 ,  
, 2012  
3 ,  
, 2011  
4 , 2012  
, 2012  
5 , 2012  
6 , 2012

	2012		2012.08.10~12



	The 33rd International Conference on Coastal Engineering	Riverbed evolution of upper part of Yangtze Estuary and its response to the recent hydrodynamic changes	Santander, Spain	2012.07.01~06
	The 33rd International Conference on Coastal Engineering	Properties of freak waves induced by two kinds of nonlinear mechanisms	Santander, Spain	2012.07.01~06
	The 33rd International Conference on Coastal Engineering	A model of beach profile evolution with wave-undertow interaction	Santander, Spain	2012.07.01~06
	The 33rd International Conference on Coastal Engineering	Subharmonic generation of transverse oscillations induced by incident regular waves	Santander, Spain	2012.07.01~06
	The 31st International Conference on Ocean, Offshore and Arctic Engineering	Numerical modeling of seabed response to combined wave-current loading	Rio de Janeiro, Brazil	2012.07.01 06
	The 10th International Conference on Numerical, Analysis and Applied Mathematics	Three-dimensional model for wave-induced dynamic pore pressure around monopile foundation	Kos, Greece	2012.09.19 25
	The 6th Chinese-German Joint Symposium on Hydraulic and Ocean Engineering	Review on the Occurrence Probability of Freak Waves		2012.09.23~29
	The 6th Chinese-German Joint Symposium on Hydraulic and Ocean Engineering	Development of a three-dimensional model for wave-induced seabed response		2012.09.23~29
	The 6th Chinese-German Joint Symposium on Hydraulic and Ocean Engineering	Observational Study of Morphodynamics of Sandy Beaches in Yueliang Bay, Northeastern Hainan Island		2012.09.23~29
	4th International Conference on Estuaries and Coasts	A method to determine the cross-shore varying roller slope in the surf zone	Hanoi, Vietnam	2012.10.08~11
	4th International Conference on Estuaries and Coasts	Cross-waves in a channel with trapezoidal depth	Hanoi, Vietnam	2012.10.08~11

	Newcastle University	Dynamically adaptive high-resolution Tsunami (DART) model	2012.03.07
	Cardiff University	Hydro-environmental research at Cardiff University	2012.04.25
	Dalhousie University	Statistical Estimation of Extreme Ocean Currents over the Northwestern Atlantic Ocean	2012.05.25
Dano Roelvink	UNESCO-IHE	New insights in morphodynamic modelling: seven golden rules	2012.10.25
Chari Pattiaratchi	The University of Western Australia	Modern ocean observations and prediction: from waves to whales	2012.12.06